



GREENPRINT ISSUE #9

the newsletter of the Green Party of Manitoba
June 2010

www.greenparty.mb.ca

(204) 488-2831

Toll-Free Outside Winnipeg 1-866-742-4292

MAILING ADDRESS:

Green Party of Manitoba
P. O. Box 26023, RPO Maryland
Winnipeg MB R3G 3R3

WEBSITE: www.greenparty.mb.ca

OFFICE ADDRESS:

120 Sherbrook Street
Winnipeg MB R3C 2B4

COMING EVENTS

JUNE 30 - JULY 1:

Put some Green in your Canada Day celebrations! Come visit the GPM table at the Osborne Street Festival, meet some Green candidates, and enjoy a great city street festival.

Members outside Winnipeg:

Please consider holding a Green-themed event in your community: a picnic, block party, table at a community fair, or whatever you would like to organize.

NOVEMBER:

AGM AND ELECTIONS

See last page for details!

GPM COUNCIL

James Beddome, Leader
leader@greenparty.mb.ca

Jacqueline Romanow, President
president@greenparty.mb.ca

John Wilmot, Treasurer
treasurer@greenparty.mb.ca

Caitlin McIntyre, Secretary
secretary@greenparty.mb.ca

Ardythe Basham, Membership
membership@greenparty.mb.ca

Drew Fenwick, Elections Planning
elections@greenparty.mb.ca

Cathie Turner, Volunteer Coordinator
volunteer@greenparty.mb.ca

Trevor Vandale, Webmaster
webmaster@greenparty.mb.ca

Members at Large
Andrew Evans, Jeff Presslaff, Scott Harrison
info@greenparty.mb.ca

* * * * *

Standing Committees of the GPM are listed on page 2.

Contact information for the Policy Blogs is also on page 2.

LEADER'S MESSAGE

Dear Greens,

In this edition of *Green Print* you will find two articles, one written by Rosemary Dzus, GPM Democracy Advocate, and the other by Les Mundwiler, GPM Policy Chair. Les has really improved the policy process over the past few months, and I want to encourage members to participate. Les has created a series of closed blogs on numerous topics. Right now, we have been trying to focus on Agricultural Policy. The hope here is to build an internal online library that points people in the direction of various sources of good information regarding sustainability, so that the GPM executive and candidates can respond much more quickly and knowledgeably on a variety of subjects. Your contributions will help to shape the future direction of the party. If you are not a member of the blogs already, please send Les Mundwiler an e-mail at highbrow@prairie.ca.

I also want to highlight that the participatory press release mechanism that the GPM has in place. Any member of the party is entitled to submit a press release for review by the Media Approval Committee (MAC). The committee will look over any draft releases which are submitted, make suggested changes and approve the release or send it back for further revisions. The committee is presently composed of five people and a release requires one-third approval for passage, following which Media Secretary, Caitlin McIntyre will send out the release to all media contacts. For ease and simplicity any submissions can be sent to MAC@greenparty.mb.ca.

I would also like to remind members that council elections are just around the corner. At our next AGM we will be electing the Council that will lead the party into the next general election. I have decided that I will run again, and I am hoping to serve as Leader for another two years provided the membership allows me to serve. If anyone is interested in running for Leader, I encourage you to step forward and run, as I feel that a leadership competition is ultimately healthy for the party. There are also numerous other council positions, so if serving as leader doesn't catch your interest, perhaps you may be interested in another position on council.

In closing, I humbly ask you to consider posting to the GPM blogs, drafting a press release on the parties' behalf, or serving on council. Remember, it is only with your help that the party moves forward!

James Beddome

STANDING COMMITTEES

Policy and Platform Standing Committee
policy@greenparty.mb.ca

Fundraising Committee
fundraising@greenparty.mb.ca

Communications Standing Committee
media@greenparty.mb.ca

Media Approval Committee
mac@greenparty.mb.ca

Conflict Resolution Committee
CRC@greenparty.mb.ca

POLICY BLOGS

Are you interested in policy development?

Les Mundwiler has set up policy research blogs as another avenue for policy discussion and development. Areas covered include transportation, energy, housing, health & food safety, water & forests, global relations & climate change, agriculture & gardening, social inclusion & poverty reduction. To join the blogs please email highbrow@prairie.ca

If you don't have internet access, but do have policy ideas, please send your suggestions to the GPM mailbox or leave a phone message at the office.

▲ "FOUR-PILLARS" PROPOSAL FOR GREEN PARTY AGRICULTURAL POLICY by Rosemary Dzus

Rosemary Dzus is the Democracy Advocate for the Green Party of Manitoba.

The National Farmers Union (NFU) has had the same message for the last 100 years --- Canada needs to develop economic and social policies

that will maintain the family farm as the primary food-producing unit in Canada. Their excellent website contains a number of documents which have been presented to various federal legislative committees and ministers concerned with agriculture and food production in Canada.

After reading some of the documents available on the NFU website, it occurred to me that the agricultural policies of the Manitoba Green Party might benefit from first articulating a series of principles from which the precise nature and wording of the agricultural policies could take their cue.

In the following paragraphs, I have outlined four main principles from which agricultural policy could be derived. Importantly, these pillars affirm the principles outlined in the "Common Values of the Manitoba Greens."

1. Control the power of input manufacturers and service providers

The trend in agricultural sectors is toward larger but fewer companies. This means reduced competition, and results in increasing input costs for farmers. Since 1985, farmers have produced and sold more than \$800 billion worth of farm products, but have managed to hang on to only \$3 billion in net farm income from the markets. This \$3 billion may seem like a lot of money, but it works out to only \$1.45 of net income per acre of Canadian cropland per year. The corporations that provide farm inputs and services (fertilizer and chemical companies, seed companies and banks for example) have captured the balance. Compared to the \$1.45 net income per acre per year to farmers, these corporations captured \$386.00 per acre per year of total farm income since 1985. For those of you with a mathematical bent, this is 266 times the farmers' share!

2. Help farmers become less dependent on transnational input manufacturers

Through research, public education and most significantly, transitional loan programs, governments can be instrumental in moving to input-reduced, organic, sustainable, energy-conserving farming methods. It would be most helpful to channel research funds to programs which focus on cost-minimization and net income maximization, rather than the current policies, which emphasize maximum production and input maximization. In other

words, in the current system, increased benefits accrue to the transnational corporations which manufacture costly input components (fertilizers, pesticides, high-tech seeds, etc.). Increased revenue to farmers is most often the result of increased production, rather than increased profits -- a vital distinction. Transition to alternative farming systems would be helped a great deal through government programs which would provide bridge financing at low interest.

3. Eliminate corporate farming

Some U.S. states, such as Iowa, already have anti-corporate farming laws. Here in Manitoba, the corporatization of the hog industry provides a vivid example of the damage that can be done to the environment and to family farms. Two-thirds of the family farm hog producers were displaced by corporate hog farms in only 15 years. It is now becoming obvious that the prosperity for all promised by the corporatization of the industry has been short-lived.

4. Focus on Food Sovereignty

The agricultural sector, at a level where it could provide a living wage for families and prosperity for rural communities, is in a long-term crisis. The vast majority of Manitobans and Canadians do not often realize this, as the corporate sector of agriculture is doing just fine. Pursuing Food Sovereignty would re-empower farmers and local communities. Food Sovereignty is based on the principles of maximizing the profitability, diversity, sustainability, democracy and fairness of food systems and their effectiveness in feeding people and communities at a local level and beyond. With Food Sovereignty as a guide, the needs of local producers, landscapes and communities come first, and people are empowered to shape the food systems that will serve them best. Trade for its own sake becomes secondary to feeding people and cultures.

These four principles as outlined could provide the basis for agricultural policy for Manitoba Greens. With these principles in mind, some policies could cover a multitude of agricultural sectors, specific policies for each sector would be more easily addressed, and adhering to these principles would also go a long way to providing a living wage to farmers and their workers.

This is only a starting point. Perhaps there need to be more pillars -- 5, 6 or eight? Is this a useful tool for narrowing down specific policies? Are these principles as outlined the most useful or should they be replaced with others? I would welcome discussion on this topic.

Thanks to the people at the National Farmers Union (NFU) who do such excellent research and writing on agriculture in Canada. Original documents for the information contained herein may be found at the NFU website, mainly from the following **two sources**:
<http://www.nfu.ca/briefs/2009/competition%20competitiveness%20standing%20committee%20brief%20SEVEN.pdf>
http://www.nfu.ca/briefs/2005/Ten_point_plan_to_end_farm_crisis_EIGHTEEN_FINAL.pdf

SITUATION STATEMENT: PROPRIETARY SEED & THE LAUDERDALE PARADOX *by Les Mundwiler*

Les Mundwiler is the Chair of the Policy Committee for the Green Party of Manitoba

The whole issue of patents and proprietary claims has huge impact in agriculture now, and its basis as an economic problem--that is, a problem for the real economy--goes back to something called "the Lauderdale Paradox," which you will find discussed in the Nov. 2009 issue of **Monthly Review**.

James Maitland, Earl of Lauderdale, observed in the early 19th c. that there was "an inverse correlation between public wealth and private riches such that an increase in the latter often served to diminish the former." You take a simple, shared process, the development of better crops through the farming community's sharing of information and of preferred seed--and you intervene with machinery or proprietary seed to give some farmers a temporary edge. The "commons" of shared information is disrupted, in time made obsolete, and the result is an open field for the corporate manipulation of what was once shared knowledge and a shared sense of enterprise. In fact, this was grasping entrepreneurship "getting something for nothing" as Veblen would later put it.

As reported in the **Manitoba Co-operator** of April 15, 2010, "major canola seed developers" have decided this year to pull out of the Prairie Canola Variety Trials. Laura Rance writes: "The stated reason for this collective decision to effectively shut down independent varietal testing is that the small-plot trials are too small to effectively measure their product's performance. The companies have also complained that, although weeds were controlled in a standardized fashion in these plots, the herbicide-tolerant varieties were not treated with the products to which the genetics are linked." The genetics are proprietary, the herbicides are proprietary. If you buy one piece of the industrial puzzle, you've got to buy the whole thing "for best results."

In the same fine issue of the **Co-operator**, you can discover the occasion of a presentation of Monsanto's current version of industrialized agriculture. The Monsanto man says: "In the next 10 years you're going to see water use efficiency, nitrogen use efficiency, more efficient plants that can just grow better, period." Anything to worry about here? As Rance says, "With some crops, farmers are no longer allowed to save their own seed for replanting due to contractual obligations. With others, hybrids have become the dominant source of seed, and they can't be replanted due to genetic breakdown." But, of course, traditionally, farmers have been the ones to test seed in particular micro-environments, and to develop better yields based on seed harvested from the best growths.

For Greens tracking agricultural issues, I think you can't do better than to keep your eye on these two publications: **Manitoba Co-operator** for on-the-ground issues in Manitoba agriculture, and **Monthly Review** for an ongoing assessment of the global economic crisis.

ALSO RECOMMENDED:

Vere Scott also recommends the website of ISIS, the Institute of Science in Society:
<http://www.i-sis.org.uk/index.php>

Two recent articles discuss devastating ecological impacts of glyphosate-tolerant (Roundup Ready) crops.

CONCORDIA BY-ELECTION



On March 2nd, nineteen year old Ellen Young made her political debut representing the Green Party of Manitoba in the race to take over Gary Doer's old constituency in the 2010 Concordia by-election. The other candidates in the race for the former Premier's seat were Brian Biebrich from the Conservative Party, Judi Heppner from the Liberal Party, and Matt Wiebe from the NDP.

Ellen earned a respectable 3.8% of the popular vote, which is nearly half a percent increase from the Green Party's 2007 result in Concordia.

While spending a lot of time canvassing door-to-door, reaching out to voters online, and developing positive public relations all around, Ellen Young was also juggling school, work and volunteer commitments in her very busy, but passionate life.

Although the Green party has a very long way to go before swaying the predominantly NDP voters of Concordia, the thing that Ellen acknowledges is that the hope for change is still in the hearts of many of the residents in the Concordia riding.

Ellen Young congratulates Matt Wiebe on his victory, but wishes the next Green Party candidate the best of luck in the 2011 provincial election.

THE GREEN PARTY OF MANITOBA NEEDS YOU!

As this newsletter is being mailed, we are about 16 months away from the provincial election scheduled for October 4, 2011. We aim to offer every citizen of Manitoba the choice to vote Green, and we hope to elect the first Green MLA in Manitoba. We need your help!

What can you do?

Be sure to keep your own membership up to date! All memberships are for the calendar year, January - December. If you are a monthly donor, you are a Sustaining Member and never need to renew.

Use the membership form on the other side of this page to sign up new members. Call or write for more copies, if you don't have access to copying facilities.

Join or start a Constituency Association to begin the process of finding good candidates for 2011 and raising money and volunteer support to help your candidate run an effective campaign.

For information on setting up a Constituency Association, contact the Elections Planning Coordinator by email at elections@greenparty.mb.ca or by mail or telephone.

IMPORTANT NOTICE:

To be eligible to vote at the General Meeting in November, you must be a member in good standing at least 30 days before the AGM. To ensure that you receive a ballot, be sure to get all new and renewed memberships in by the beginning of October.

GREEN PARTY OF MANITOBA:

towards a sustainable future

I want to become a member of/renew my membership in the Green Party of Manitoba. I enclose the membership fee circled below:

Annual membership: \$10/year Youth membership (14-17): \$5/year Three year membership: \$25

All memberships are based on a calendar year from January-December.

I support the goals and principles of the Green Party of Manitoba. I affirm that I am not a member of another provincial political party.

Name: _____ Address: _____

Postal Code: _____ Home # _____ Work # _____

Email: _____ Constituency (if known): _____

Signature: _____

YES, I will volunteer to help the Green Party of Manitoba prepare for the next election.

I prefer to be contacted by: _____ phone _____ email _____ post

PLEASE BE SURE you have completed and signed all applicable parts of this form, and mail it to:

Green Party of Manitoba
P. O. Box 26023
RPO Maryland
Winnipeg MB R3G 3R3

Email: membership@greenparty.mb.ca

Your financial support will help the Manitoba Greens to be an effective voice for a sustainable future in Manitoba.

DONATION/PLEDGE FORM

I will support the Green Party of Manitoba with a donation of _____

I will support the Green Party of Manitoba with a monthly donation of
\$50__ \$30__ \$20__ \$10__ Other \$__

My SIGNED and VOIDED cheque is attached.

Please make my contribution on the _____ of each month.

Signed:

(donor)

(Treasurer, for GPM)

IF YOU WOULD LIKE TO USE A CREDIT CARD TO MAKE A DONATION OR PAY YOUR MEMBERSHIP FEE, PLEASE EMAIL treasurer@greenparty.mb.ca or phone 488-2831 (in Winnipeg) or 1-866-742-4292 (TOLL FREE). YOU WILL BE CONTACTED TO PROVIDE YOUR CREDIT CARD INFORMATION.

Your donation to the Green Party of Manitoba earns a tax credit up to 75% to be applied to taxable income.

VINTAGE & VOGUE FASHION SHOW

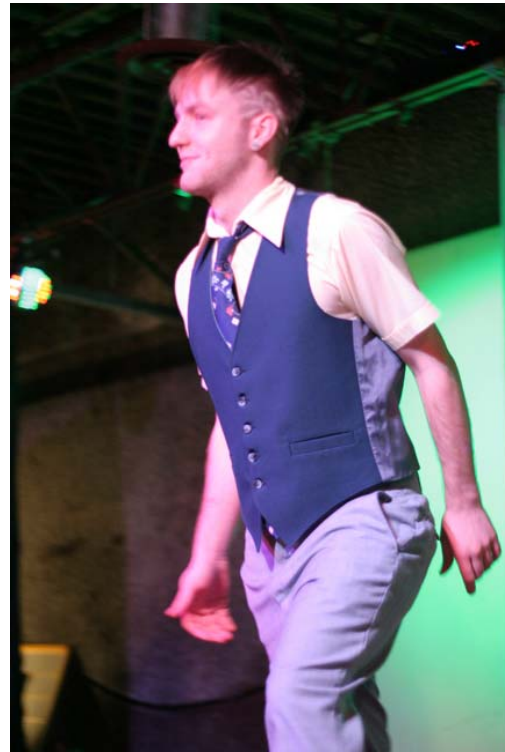
The first Vintage and Vogue Fashion Show Fundraiser was held on April 20 at The Academy in Osborne Village. Local designers and retailers whose work emphasizes vintage/repurposed/reworked clothing and fashion accessories were invited to showcase their designs for Spring.



Participating businesses included Vintage Bling, Hungover Empire, KLAS Clothing, Ragpickers, Sew Dandee, The Closet on River, and handbags by Kimberly Robak-Radke. The Friendly Florist provided decorations and Berns & Black graciously donated their staff and time to do hair and make-up for our models.



All Photos
this page
by
Cooki
Lumsden



Jessie Klassen won our door prize of original art by Josh Kerschtién. Kathy Fenton won our raffle—a gift basket valued over \$400 with products and certificates from Babbs Boutique, Blue Earth Organic, Green Bean Coffee, Hemyrean, Sandbox magazine, and Sweet Impressions.

We wish to give a huge thanks to event organizer Jess Ehlers of With A Flourish, Chrissie Troy of Hot 103 for emceeing, our DJs, and all the volunteers who helped out.

Feedback from event attendees was enthusiastic and positive, describing the evening as fun and unique, with creative and inventive fashions. We plan to hold a second annual fashion show fundraiser next spring.



ANNUAL GENERAL MEETING AND PARTY ELECTIONS

The Green Party of Manitoba Annual General Meeting will be held in November, 2010.

Message from Drew Fenwick, AGM Planning Chair of Council:

"There will be a annual general meeting which will be held outside of Winnipeg and council is now under negotiation with several communities, all of which at early indications, are eager to host such an event. Members should plan on incurring some reasonable expense in order to attend. As details are finalized they will be communicated at a future time to our members. Best efforts will be made to reduce carbon imprint and environmental impact in delivering our membership and conducting this meeting at this yet undetermined location. It should be noted that the AGM is being planned with intent on minimizing the cost of attending.

Our attendance in a community other than the perennial Winnipeg will be honouring those people who hold true the ideals and values of Greens - and that this province is more than sum of its largest city. The voices and presence of Greens from throughout the province are welcomed and nurtured by our annual general meeting - being for the first time elsewhere than Winnipeg in the province. This was a leadership campaign promise of James Beddome's and we will see it through to a reality. The Greens are alive and well in rural Manitoba - I invite you to come and join us as we build our party together."

Please direct your questions, suggestions or offers of help to the AGM Planning Chair, Drew Fenwick, at elections@greenparty.mb.ca.

At this AGM the party will elect a leader and executive council for a two year term.

All potential candidates for council positions should email the Chief Financial Officer at cfo@greenparty.mb.ca identifying their position of interest, with a brief note explaining why you would like to be considered and any relevant qualifications.

Members who do not have email can write to:

Green Party of Manitoba

Box 26023, RPO Maryland, Winnipeg R3R 3G3 or phone 488-2831. If you live outside Winnipeg, you may use the toll-free number, 1-866-742-4292 to leave a message.

If you are considering a run for leadership, please be advised that there are regulations governed by Elections Manitoba. You can learn more about those requirements at: <http://elections.mb.ca/en/Publications/Guides/index.html>

WE NEED YOU to consider running for council! Candidates for Member-at-Large positions are encouraged - ideal for those members who would like to lend their expertise but may feel they have less time to volunteer on council.

The **Leader** serves as chief representative and spokesperson for the party.

The Executive Council includes:

President: responsible for internal administration, including conducting meetings, assisting Party committees, other tasks as required.

Treasurer: responsible for financial affairs and records of the GPM, including those required by Elections Manitoba; with the CFO, ensures compliance with legal requirements.

Secretary: responsible for all GPM records, including minutes, resolutions, and internal Party and provincial election results, except those kept by the treasurer or CFO.

Membership Development Co-ordinator: responsible for maintaining the GPM member database and for member recruitment, retention, and internal communication.

Election Planning Co-ordinator: responsible for election readiness, including recruitment and training of candidates; in election years, serves as the GPM Central Campaign Director.

Members-at-Large: expected to attend at least 50% of Executive Council meetings and to carry out agreed-upon duties.